

ARTICLE NUMBER 1831-SKC04XXXP062 (XXX - cable length L [cm])

MULTILINE E



Power plug, female

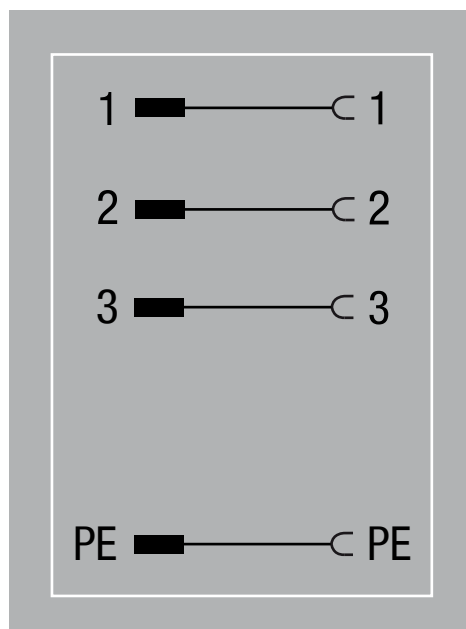
Insert - Plug type C

M12

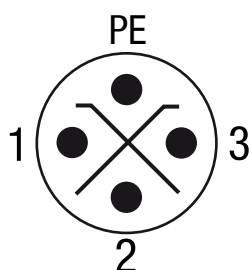
4-pole

S-coded

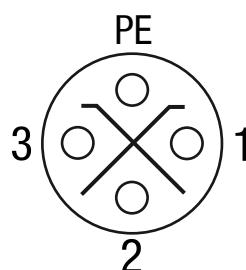
fits to electrical insert
1831-SKC04XXXP061

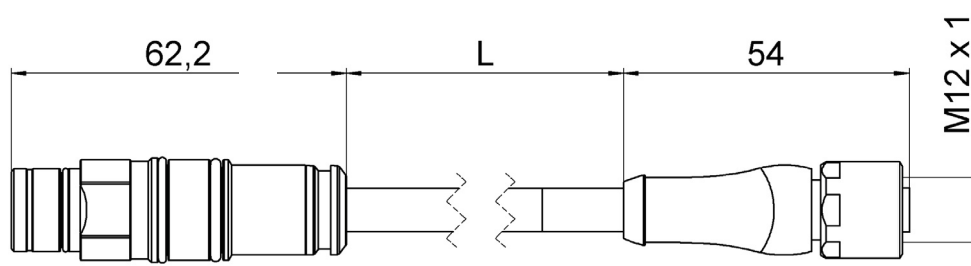


Male



Female





General data

Temperature range (fixed)	-25 to +80 °C
Temperature range (moving)	-20 to +80 °C
Rated impuls voltage	1,5 kV
Mounting method	inserted, tightened

Technical data

Operating voltage	max. 630 V AC/DC
Operating current per contact	max. 12 A
Number of poles	4
Coding	S-coded
Locking of ports	screw thread (M12×1 mm) recommended torque 0,6 Nm, self-securing
Compression gland	M12
Protection	IP65 and IP67 when inserted and tightened (EN 60529)
Material group	Category I according to IEC 60664-1
Material (base body)	POM

Cables

Cable identification	P06
Number/diameter of wires	4 x 1,5 mm ²
Wire isolation	PP
Material (jacket)	PUR
Outer Ø (jacket)	7,7 mm ± 5%
Color (jacket)	black
Bend radius (fixed)	7,5 x outer Ø
Bend radius (moving)	10 x outer Ø

Commercial data

Minimum order quantity	1
Country of origin	DE