

**ONE STEP AHEAD**

ANSCHLUSSTECHNIK VON

**Eisele**.EU

## MULTILINE ADAPTIVE

The modular connection system in  
premium quality



**EASY TO INSTALL**

**FLEXIBLE  
CONFIGURATION**

**GUARANTEED  
LEAK-PROOF**



For automation,

food industry,

pharmaceuticals and  
medical

# FLEXIBLE CONFIGURATION

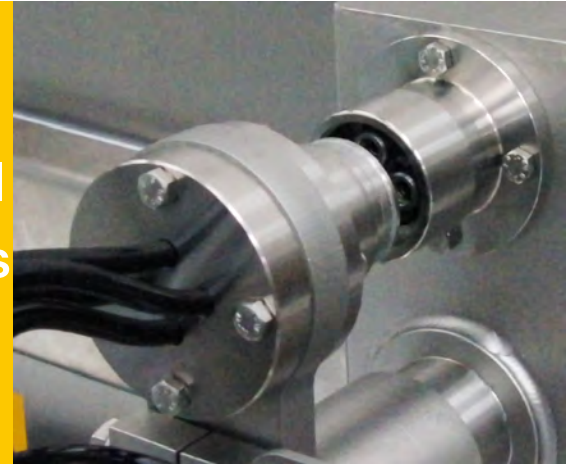
The adaptive inserts of the MULTILINE ADAPTIVE series can be configured as needed, regardless of the hose size and material. Multiple materials (aluminium, stainless steel, brass), different diameters and different shut-off functions and seals make the system a genuine modular kit. Changes or modifications can be made later with no problem.



# EASY TO INSTALL

The high-quality solid metal connections of the **MULTILINE ADAPTIVE** series are very easy to install by hand. You only have to push the adaptive inserts into the bores of the connector body until you feel them lock into place.

Then push the ends of the hose to be connected all the way into the release sleeve of the adaptive insert. Tools or adaptation of the hose are not necessary.



# GUARANTEED LEAK-PROOF

The MULTILINE ADAPTIVE is a highly reliable multiple connector for connecting functional groups to machines. The adaptive inserts are available with and without shut-off and in drip-free versions, for safe connection and disconnection also under pressure. Together with the single or double O-ring seals on the hose side they provide for maximum safety and a reliable seal.



# WORLD INNOVATION: MULTILINE ADAPTIVE

- Fast connection and disconnection without tools
- Frequent mounting and removal possible
- Adaptation of hose is not necessary
- Minimum installation space and maximum flow in hose
- Optimal material quality
- Easy to clean, durable and robust
- Very high flexibility



**Diversity of  
variants**

**High-quality  
workmanship**

**Saves time and  
space**

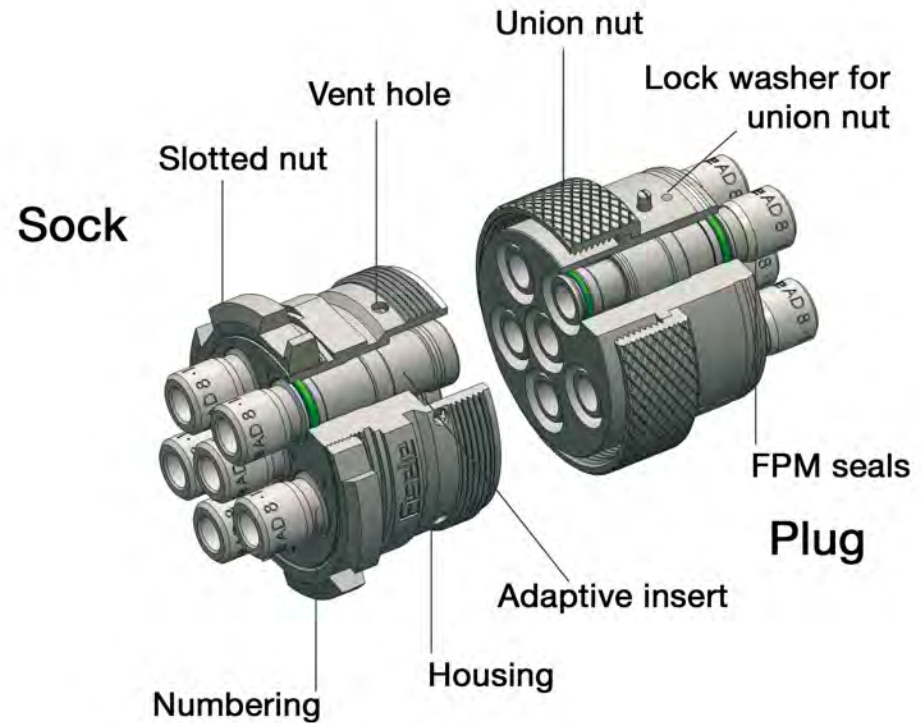


**MULTILINE ADAPTIVE**



[www.eisele.eu](http://www.eisele.eu)

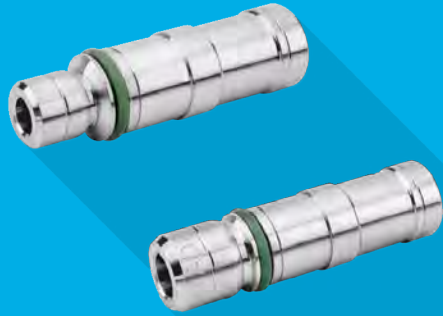
# Design of the MULTILINE ADAPTIVE





# Adaptive inserts of the MULTILINE ADAPTIVE

With and without  
shut-off



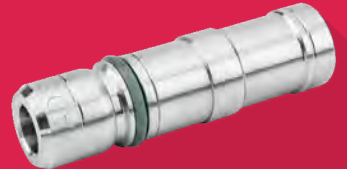
With drip-free  
shut-off



Dezincification  
resistant brass



Stainless steel

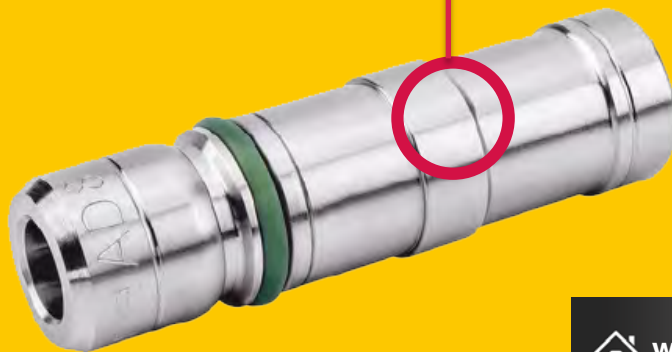
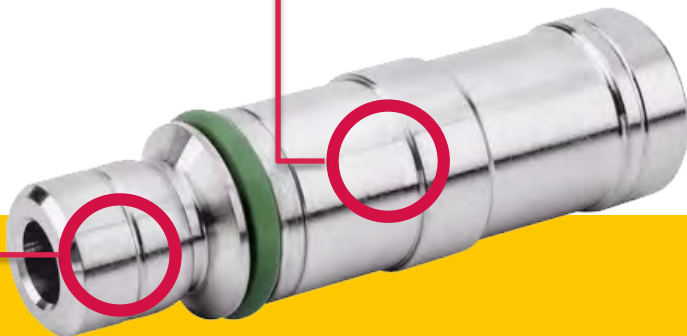


**Safe  
handling**

**Full flow**

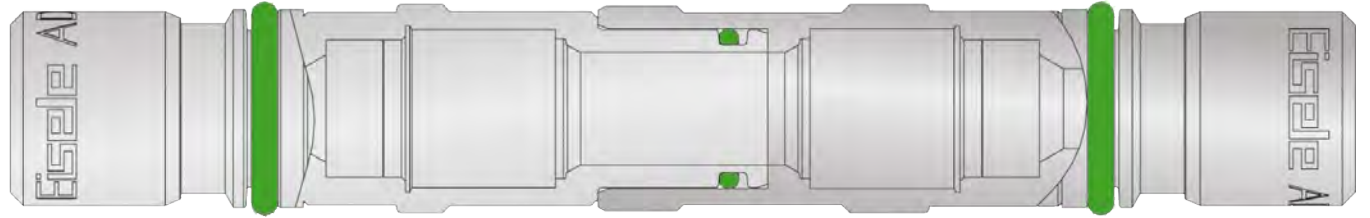
**Many options for  
combination**

**Adaptive inserts with and  
without shut-off**

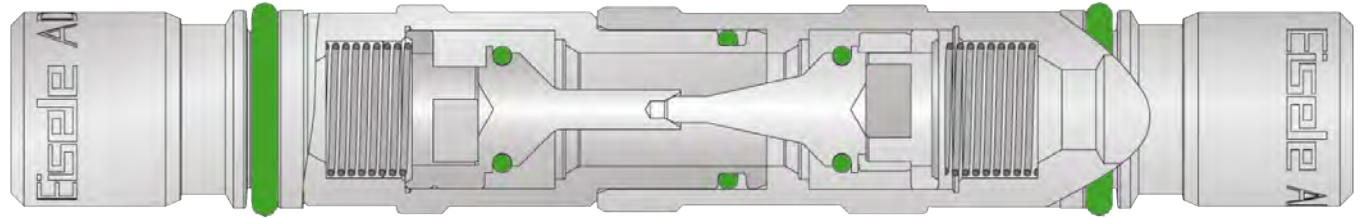


[www.eisele.eu](http://www.eisele.eu)

# Functional principle of adaptive inserts without shut-off



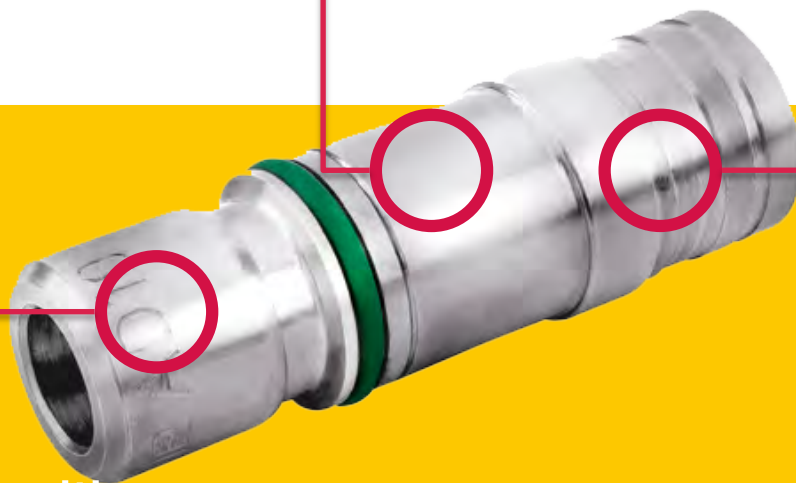
# Functional principle of adaptive inserts with shut-off



**Connection and  
disconnection  
under pressure**

**Special flat  
sealing  
mechanism**

**Special protection  
against losses**

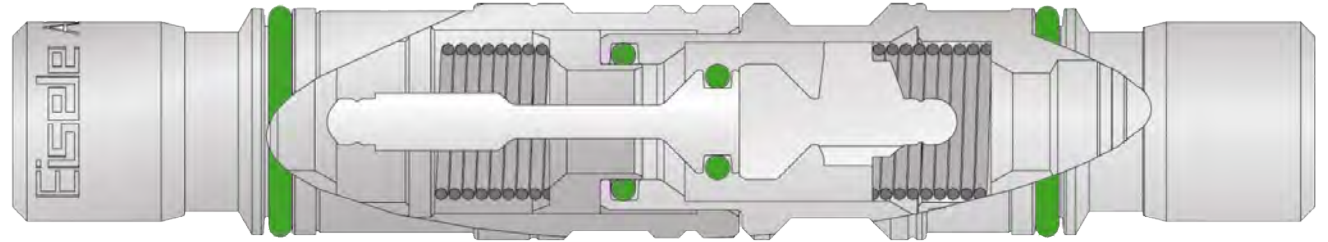


**Adaptive inserts with  
drip-free shut-off**



[www.eisele.eu](http://www.eisele.eu)

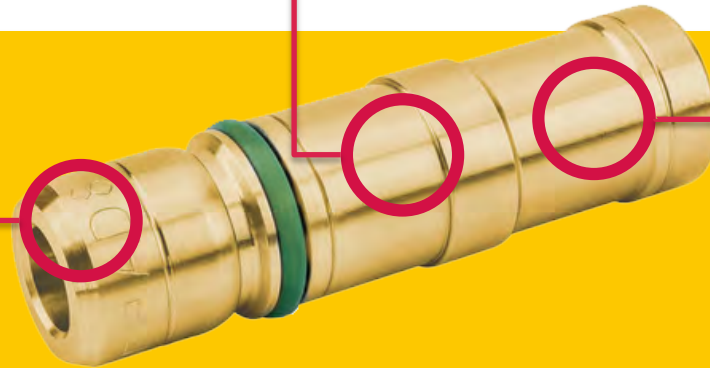
# Functional principle of adaptive inserts with drip-free shut-off



**For closed  
cooling water circuits**

**For corrosive  
conditions**

**High-quality  
materials**



**Adaptive inserts of dezincification  
resistant brass**

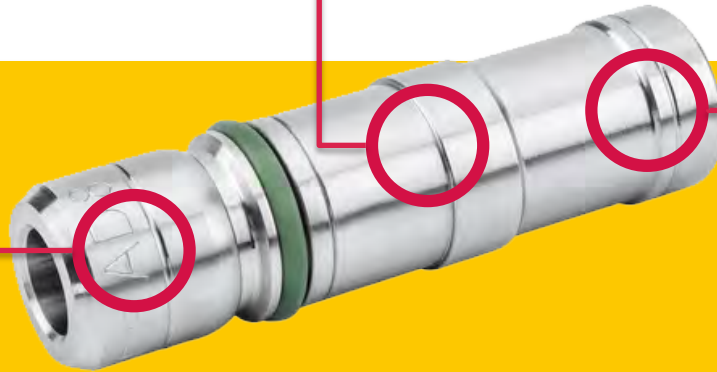


[www.eisele.eu](http://www.eisele.eu)

**For aggressive  
media and high  
temperatures**

**Robust and  
hygienic**

**For the food and  
pharma industries**

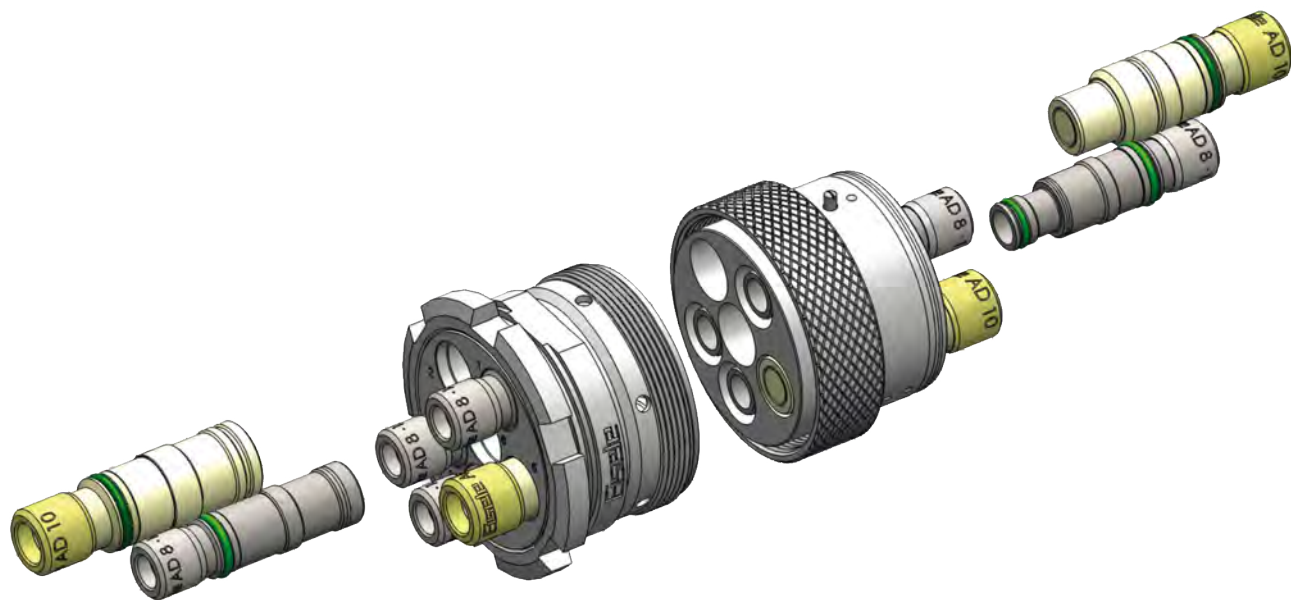


**Adaptive inserts of  
stainless steel**



[www.eisele.eu](http://www.eisele.eu)





# MULTILINE ADAPTIVE

The modular solution for all connections



[www.eisele.eu](http://www.eisele.eu)

# EISELE quality

- 100 % Made in Germany
- Solid metal connections
- Durable and robust
- Maximum reliability



“From the design through to delivery and beyond we guarantee the premium quality of Eisele products”

Klaus Harsch, Design Engineer



[www.eisele.eu](http://www.eisele.eu)

# CHECKLIST MULTILINE ADAPTIVE 1

- ☒ Robust and durable
- ☒ Base body of stainless steel / anodised aluminium
- ☒ Easy to clean and highly hygienic
- ☒ Easy installation and handling



# CHECKLIST MULTILINE ADAPTIVE 2

- ☑ High sealing requirements
- ☑ Flexible configuration
- ☑ Compact installation space
- ☑ Different hose sizes



# Do you still have questions? We will be glad to advise you!



SUPPORT BY PHONE  
+49 (0)7151-1719-0



E-MAIL TO US  
[CLICK HERE](#)

Eisele Pneumatics GmbH & Co. KG

High-quality connection components for compressed air, gases  
and fluids

Hermann-Hess-Str. 14-16

D-71332 Waiblingen

Phone +49 (0)7151-1719-0

Fax +49 (0)7151-1719-17

[info@eisele.eu](mailto:info@eisele.eu)



[www.eisele.eu](http://www.eisele.eu)