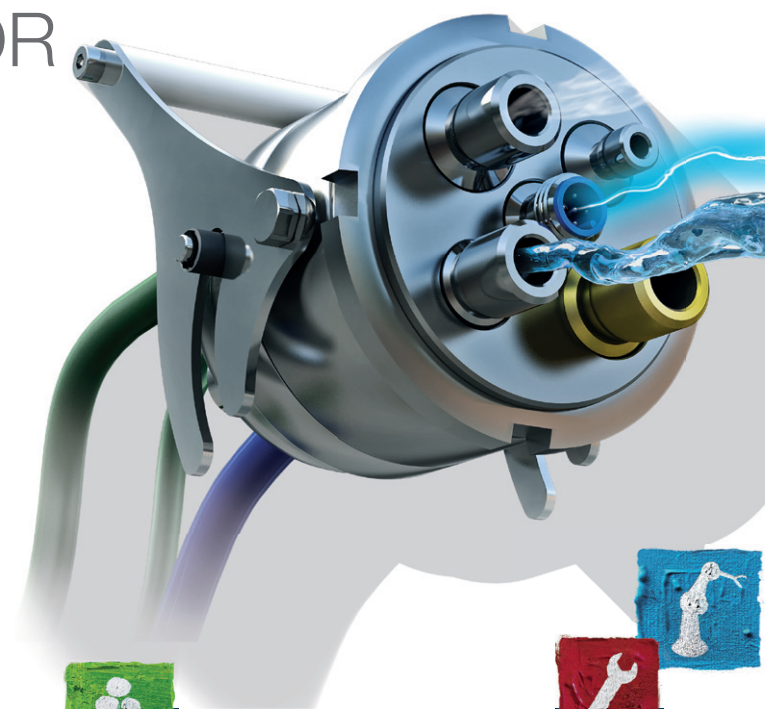


# MULTILINE E

## MULTIPLE CONNECTOR

The MULTILINE E is a modular, multiple and multi-media connector that makes it possible to combine many different types of operating media such as compressed air, gases, fluids, electrical and electronic signals in one interface. It is designed for convenient use in control cabinets, tools, and machine components. The unique feature of the MULTILINE E is that electrical connections and media can be connected simultaneously and under pressure in one drip-free connection.



### MAXIMUM MODULARITY IN THE INDUSTRIAL ENVIRONMENT

- One interface for compressed air, gases, fluids, electrical and electronic signals
- Maximum modularity due to freely configurable connections
- Different media can be connected and disconnected simultaneously
- Integrated coding patterns in the housings prevents incorrect connections
- Easy, tool-free mounting and dismounting
- Locking lever reduces the manual force needed for assembly
- Shorter machine set-up times

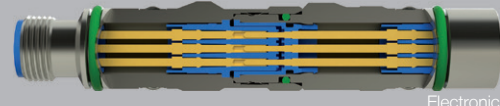
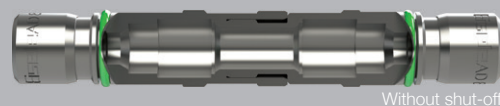
### MODULAR KIT SYSTEM WITH MORE THAN 1000 VARIANTS

For connection of a wide variety of M12 connection lines (5-pin, 6-pin, and 8-pin, B-coded and D-coded).



### ADAPTIVE INSERTS AT A GLANCE

- Robust solid-metal housing with quick connection
- Optimal operation from -20°C to 120°C
- Different tube diameters

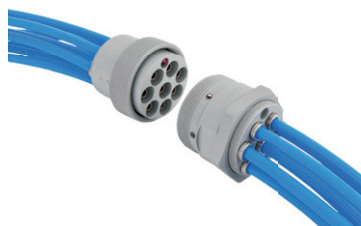


## MULTIPLE CONNECTOR SERIES



1800

- Round design
- For use with compressed air
- 4 to 40 connections
- Anodized aluminium
- Without shut-off
- With positioning pin
- Most compact connector on the market
- Full-flow
- Tool-free assembly



1811

- Round design
- For use with compressed air
- 4 to 16 connections
- Anodized aluminium
- With or without shut-off
- Intuitive connection
- Connect and disconnect under pressure
- 4 color and position coding options
- Tool-free assembly



MULTILINE ADAPTIV / E

- Round or square design
- For use with compressed air, fluids and electronic signals
- Up to 12 connections
- Stainless steel, aluminium, nickel-plated
- With or without shut-off; Drip-free
- Intuitive connection
- Connect and disconnect under pressure
- Different tube sizes in one connector
- Tool-free assembly
- Individually configurable connector

## MEDIA

### Compressed air

- With and without shut-off
- Stainless steel, nickel-plated
- Different sealing materials
- For tubes with an outer diameter of 3 mm to 14 mm

### Fluids

- With or without shut-off, drip-free
- Stainless steel, nickel-plated brass, dezincification-resistant brass
- Different sealing materials
- For tubes with an outer diameter of 3 mm to 14 mm

### Electronics

- Standardized M12 round connector
- Nickel-plated brass
- B-coded and D-coded (Profibus, Profinet, Ethernet, Ethercat)
- Cube67
- A-coded, 5-pin to 12-pin
- M12 power plug for up to 630 volts

NEU



## QUALITY CONNECTION COMPONENTS

FOR COMPRESSED AIR, GASES, LIQUIDS  
ELECTRICAL AND ELECTRONIC SIGNALS

# Eisele

Eisele Pneumatics GmbH & Co. KG  
Quality connection components  
for compressed air, gases, liquids,  
electrical and electronic signals

Lise-Meitner-Str. 8/1  
71332 Waiblingen | Germany

Telefon +49 (0) 7151-1719-0  
Fax +49 (0) 7151-1719-17

info@eisele.eu  
www.eisele.eu